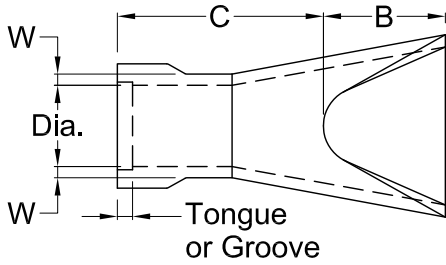
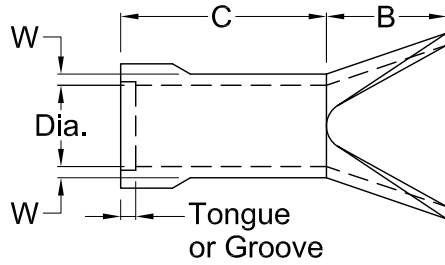


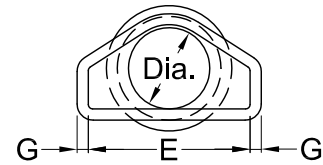
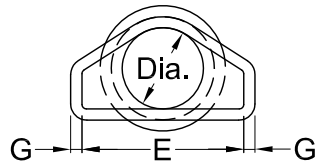
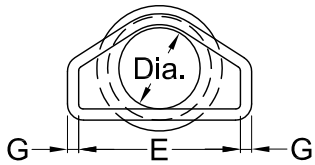
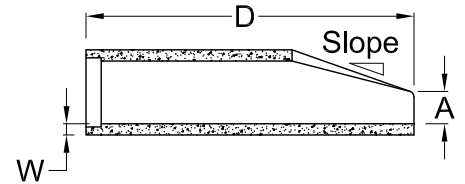
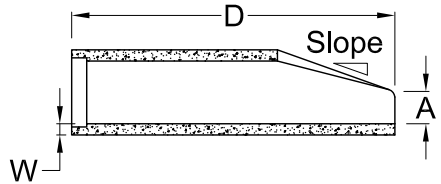
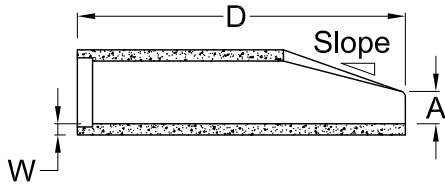
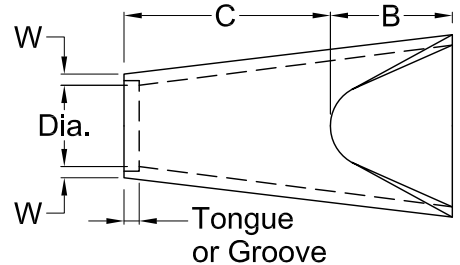
A



B



C



Diameter	W	Tongue or Groove	Type	A	B	C	D	E	G	Radius	Slope
12"	2"	3 5/8"	A	4"	2'-0"	4'-1"	6'-1"	2'-0"	2"	9"	3:1
15"	2 1/4"	3 5/8"	A	6"	2'-3"	3'-10"	6'-1"	2'-6"	2 1/4"	11"	3:1
18"	2 1/2"	3 5/8"	B	9"	2'-3"	3'-10"	6'-1"	3'-0"	2 1/2"	5 3/4"	3:1
21"	2 3/4"	3 7/8"	B	9"	3'-0"	3'-1 1/2"	6'-1 1/2"	3'-6"	2 3/4"	6 7/8"	3:1
24"	3"	3 7/8"	B	9 1/2"	3'-7 1/2"	2'-6"	6'-1 1/2"	4'-0"	3"	7 1/2"	3:1
27"	3 1/4"	4"	B	10 1/2"	4'-1 1/2"	2'-0"	6'-1 1/2"	4'-6"	3 1/4"	8 1/2"	3:1
30"	3 1/2"	4"	B	12"	4'-5"	1'-7 3/4"	6'-1 3/4"	5'-0"	3 1/2"	9 1/4"	3:1
36"	4"	4"	B	15"	5'-3"	2'-10 3/4"	8'-1 3/4"	6'-0"	4"	11"	3:1
42"	4 1/2"	4 1/4"	A	21"	5'-3"	3'-9"	9'-0"	6'-6"	4 1/2"	22"	3:1
48"	5"	4 1/4"	C	24"	6'-0"	2'-2"	8'-2"	7'-0"	5"	22"	3:1
54"	5 1/2"	4 1/2"	C	27"	5'-5"	2'-11"	8'-4"	7'-6"	5"	24"	2:4:1
60"	6"	4 1/2"	C	30"	5'-0"	3'-3"	8'-3"	8'-0"	5"	24"	2:1
72"	7"	5"	C	34"	6'-6"	1'-9"	8'-3"	9'-0"	7"	24"	2:1

NOTE

1. MANUFACTURED IN ACCORDANCE WITH APPLICABLE PROVISIONS OF ASTM C76, AND AASHTO M170, CLASS III

FLARED END SECTIONS



1 EAST NINTH STREET
 ROMEOVILLE, IL 60446
 PH: (815) 834-0320
 FAX: (815) 838-9275

DRN BY: DM	DATE 07/27/07	DWG NO.	REV
CHK'D BY:	DATE	SCALE NTS	SHEET OF