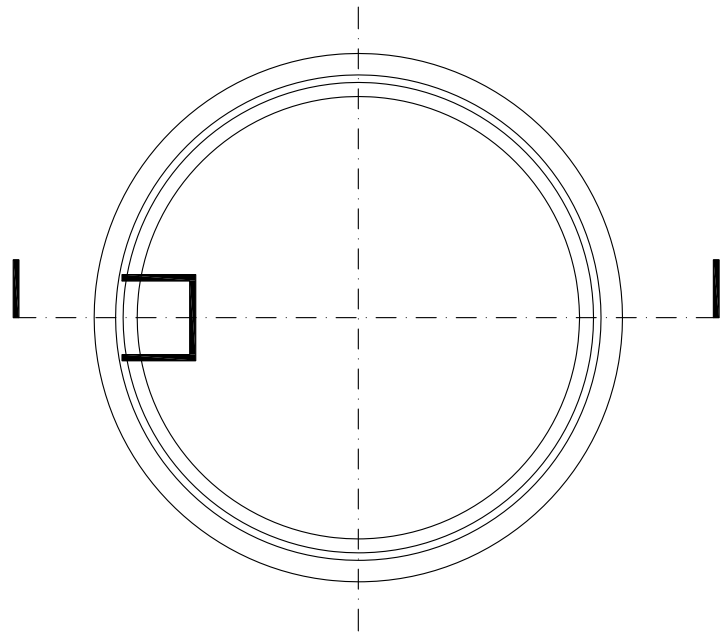
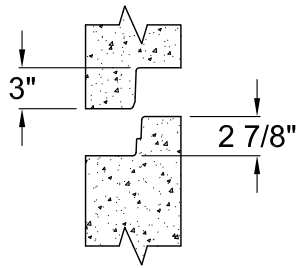


EXTERIOR



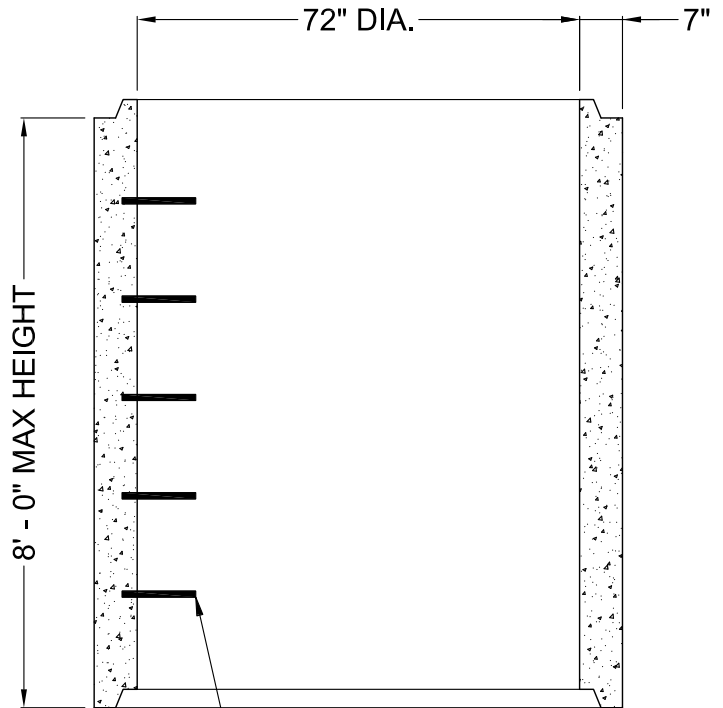
JOINT DETAIL

CUSTOM HEIGHTS AVAILABLE

TYPICAL HEIGHTS ARE 1' - 4", 2' - 8", 4' - 0", AND 5' - 4"

NOTES

1. ALL UNITS MEET ASTM C-478 FOR PRECAST SECTIONS.
2. ALL UNITS MEET ASTM A-82, A-496, A-185, AND A-497 FOR REINFORCEMENT.
3. ALL UNITS MEET AASHTO M 199M.
4. BUILT IN ACCORDANCE WITH WISCONSIN STANDARD SPECIFICATIONS CHAPTER 3.5.0 AND 3.6.0.
5. BUILT IN ACCORDANCE WITH IDOT AND WDOT STANDARD SPECIFICATIONS.
6. COATINGS OPTIONAL AS REQUIRED.



STD STEPS
 PLASTIC COATED STEEL
 16" O.C. (AS REQ'D)

STANDARD PRECAST 72" DIA. RISER SECTION



8011 GREEN BAY ROAD
 KENOSHA, WI. 53142
 PH: (262) 694-3166
 FAX: (262) 694-9185

DRN BY: DM	DATE 07/25/07	DWG NO.	REV
CHK'D BY:	DATE	SCALE NTS	SHEET OF