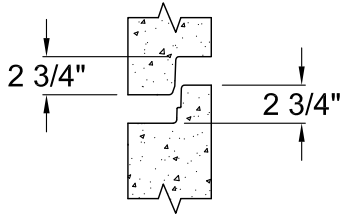
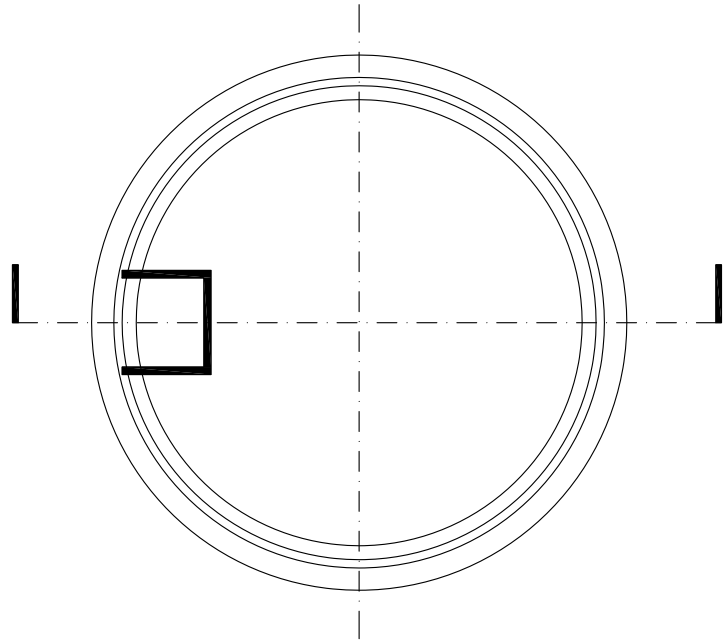


EXTERIOR



JOINT DETAIL

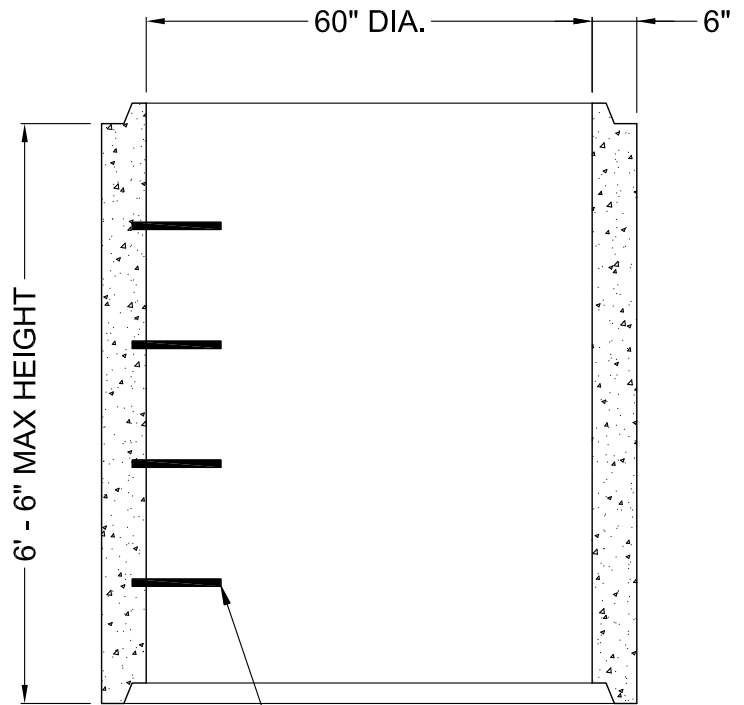


CUSTOM HEIGHTS AVAILABLE

TYPICAL HEIGHTS ARE 1' - 4", 2' - 8", AND 4' - 0"

**NOTES**

1. ALL UNITS MEET ASTM C-478 FOR PRECAST SECTIONS.
2. ALL UNITS MEET ASTM A-82, A-496, A-185, AND A-497 FOR REINFORCEMENT.
3. ALL UNITS MEET AASHTO M 199M.
4. BUILT IN ACCORDANCE WITH WISCONSIN STANDARD SPECIFICATIONS CHAPTER 3.5.0 AND 3.6.0.
5. BUILT IN ACCORDANCE WITH IDOT AND WDOT STANDARD SPECIFICATIONS.
6. COATINGS OPTIONAL AS REQUIRED.



STD STEPS  
PLASTIC COATED STEEL  
16" O.C. (AS REQ'D)

**STANDARD PRECAST 60" DIA.  
RISER SECTION**



8011 GREEN BAY ROAD  
KENOSHA, WI. 53142  
PH: (262) 694-3166  
FAX: (262) 694-9185

DRN BY: <b>DM</b>	DATE <b>07/25/07</b>	DWG NO.	REV
CHK'D BY:	DATE	SCALE <b>NTS</b>	SHEET OF