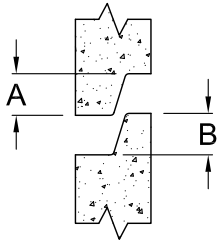
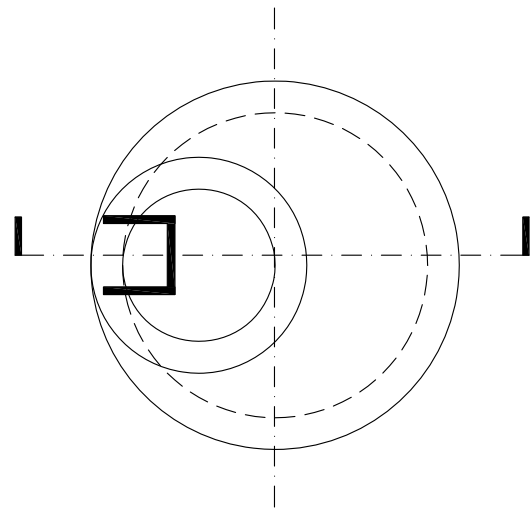
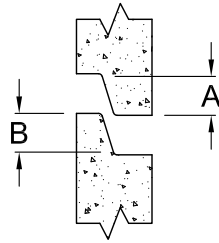


EXTERIOR



EXTERIOR



JOINT DETAIL FOR
48" AND 60" I.D.

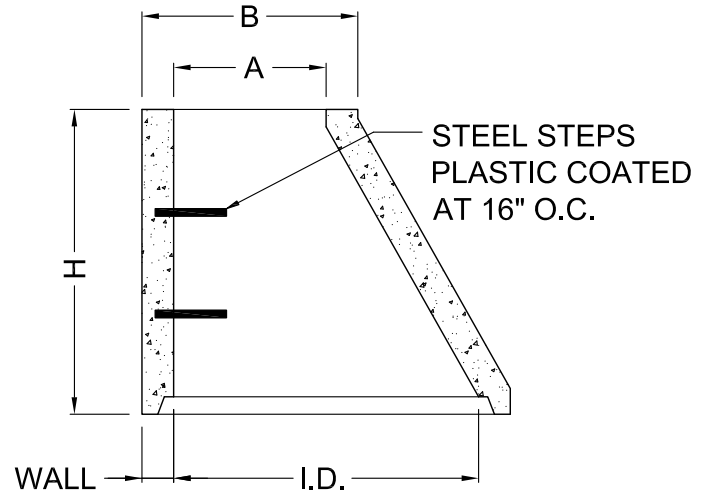
JOINT DETAIL FOR
36" I.D.

IL
WI

Inside Diameter	Wall Thickness	Access Opening ID	Access Opening OD	Groove Height	Tongue Height	Typical Heights of Cone Section
						ID
36"	4"	24"	34"	3 3/4"	3 3/4"	2' - 8"
48"	5"	24"	34"	2 3/4"	2 3/4"	2' - 0", 2' - 4", 2' - 8", 3' - 6"
48"	5"	26"	38"	2 3/4"	2 3/4"	2' - 0", 2' - 4", 4' - 0"
60"	6"	24"	36"	2 3/4"	2 3/4"	3' - 0"

NOTES

1. ALL UNITS MEET ASTM C-478 FOR PRECAST SECTIONS.
2. ALL UNITS MEET ASTM A-82, A-496, A-185, AND A-497 FOR REINFORCEMENT.
3. ALL UNITS MEET AASHTO M 199M.
4. BUILT IN ACCORDANCE WITH WISCONSIN STANDARD SPECIFICATIONS CHAPTER 3.5.0 AND 3.6.0.
5. BUILT IN ACCORDANCE WITH IDOT AND WDOT STANDARD SPECIFICATIONS.
6. COATINGS OPTIONAL AS REQUIRED.



ECCENTRIC CONE SECTIONS



8011 GREEN BAY ROAD
KENOSHA, WI. 53142
PH: (262) 694-3166
FAX: (262) 694-9185

DRN BY: DM	DATE 08/13/07	DWG NO.	REV
CHK'D BY:	DATE	SCALE NTS	SHEET OF