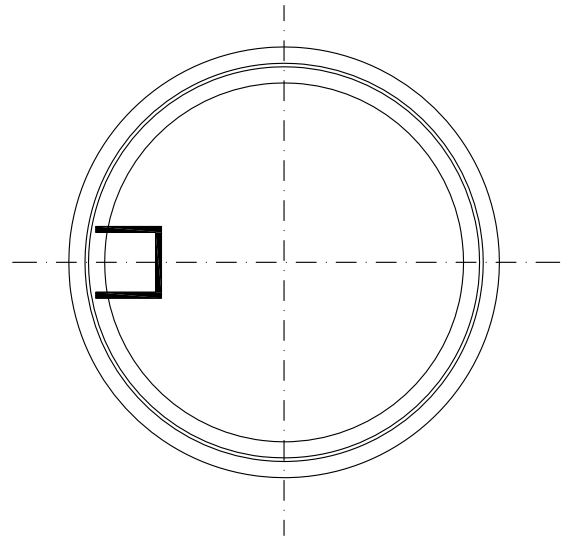
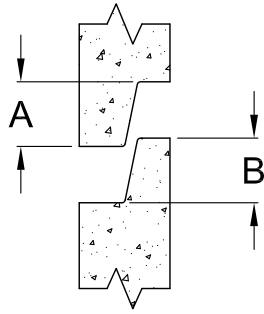


EXTERIOR

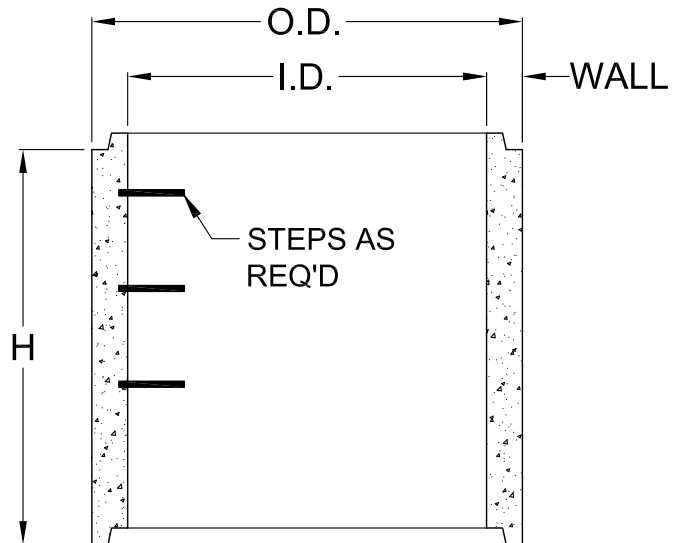


JOINT DETAIL

Inside Diameter	Outside Diameter	Wall Thickness	Groove Height	Tongue Height	Typical Heights of Riser Section
ID	OD	WALL	A	B	H
24"	30"	3"	N/A	N/A	12", 24", 36", 48" max
24"	36"	6"	N/A	N/A	12", 15", 18", 24", 36", 42", 48", 52" max
36"	45 1/2"	4 3/4"	2 3/4"	2 5/8"	12", 16", 24", 28", 32", 36", 40", 48", 60" max
48"	58"	5"	2 3/4"	2 5/8"	12", 16", 24", 32", 36", 40", 48", 56" max
60"	72"	6"	2 3/4"	2 3/4"	12", 16", 24", 32", 36", 40", 48", 60", 66", 72", 78" max
72"	86"	7"	5 1/2"	5 1/2"	12", 18", 24", 32", 36", 40", 48", 60", 66", 72", 78", 84" max

**NOTES**

1. CONCRETE TO BE MINIMUM 4500 PSI AT 28 DAYS.
2. ALL CONCRETE CATCH BASINS AND MANHOLES ARE MANUFACTURED WITH WELDED STEEL WIRE FABRIC CONFORMING TO ASTM A-185.
3. ALL MANHOLES ARE MANUFACTURED TO COMPLY WITH ASTM DESIGNATION C-478 AND ILLINOIS DEPARTMENT OF TRANSPORTATION HIGHWAY STANDARDS.



**RISER SECTIONS**



P.O. BOX 157  
 HAZELCREST, IL 60420  
 TEL: (708) 339-7765  
 FAX: (708) 338-3706

DRN BY: <b>DM</b>	DATE <b>08/31/07</b>	DWG NO.	REV
CHK'D BY:	DATE	SCALE <b>NTS</b>	SHEET OF