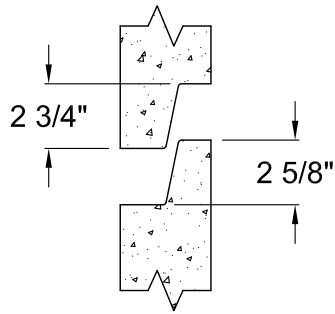


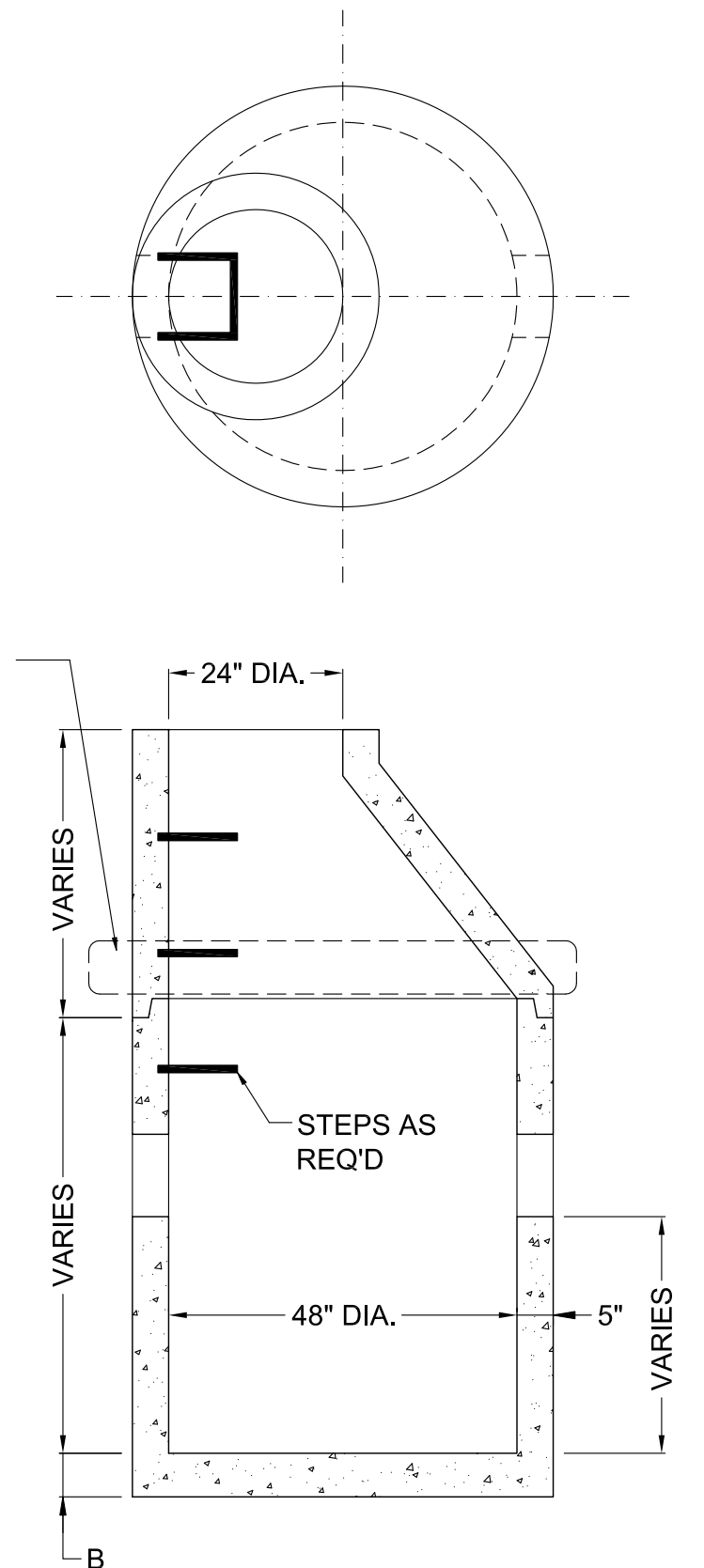
EXTERIOR



JOINT DETAIL

B = 6" TYP.  
B = 8" AS REQ'D

CONC. SLAB  
AS REQ'D



**NOTES**

1. CONCRETE TO BE MINIMUM 4500 PSI AT 28 DAYS.
2. ALL CONCRETE CATCH BASINS AND MANHOLES ARE MANUFACTURED WITH WELDED STEEL WIRE FABRIC CONFORMING TO ASTM A-185.
3. ALL MANHOLES ARE MANUFACTURED TO COMPLY WITH ASTM DESIGNATION C-478 AND ILLINOIS DEPARTMENT OF TRANSPORTATION HIGHWAY STANDARDS.

### 48" DIA. CATCH BASIN



P.O. BOX 157  
 HAZELCREST, IL 60420  
 TEL: (708) 339-7765  
 FAX: (708) 338-3706

|                      |                         |                     |          |
|----------------------|-------------------------|---------------------|----------|
| DRN BY:<br><b>DM</b> | DATE<br><b>08/31/07</b> | DWG NO.             | REV      |
| CHK'D BY:            | DATE                    | SCALE<br><b>NTS</b> | SHEET OF |