

PLAN VIEW

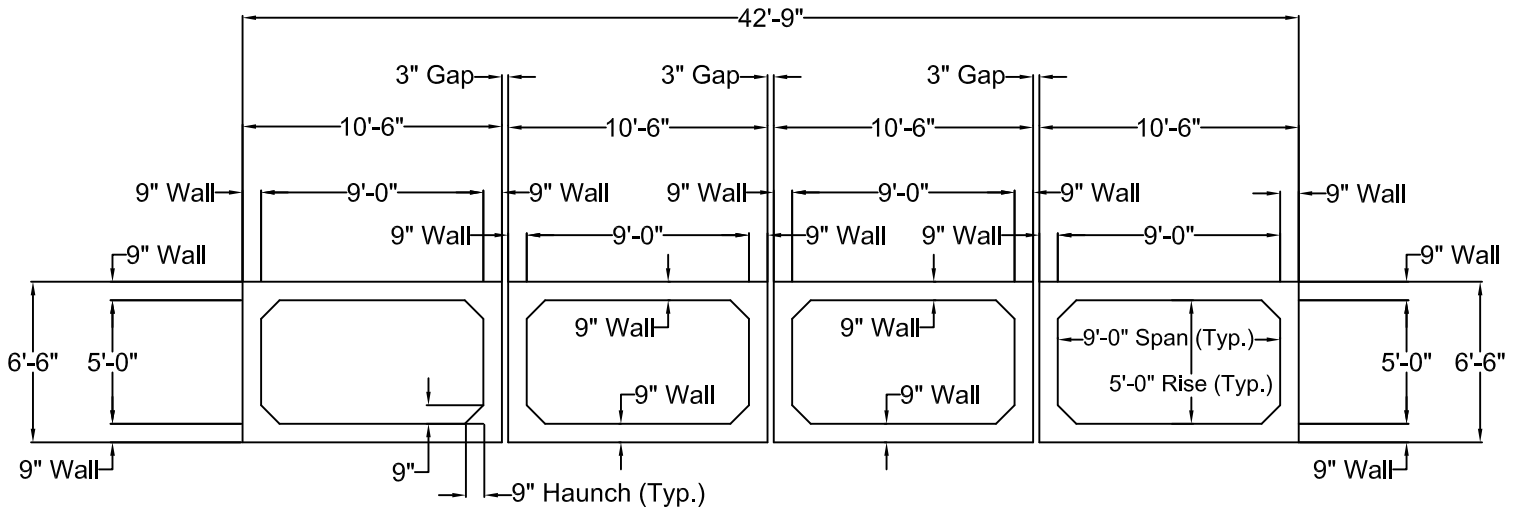
DESIGNED BY:	G.S.	DATE:	4-29-08
DRAWN BY:	P.B.	DATE:	4-29-08
SCALE:	N.T.S.	PAGE:	1 OF 2

9'-0" X 5'-0" PRECAST
BOX CULVERT
DETENTION SYSTEM

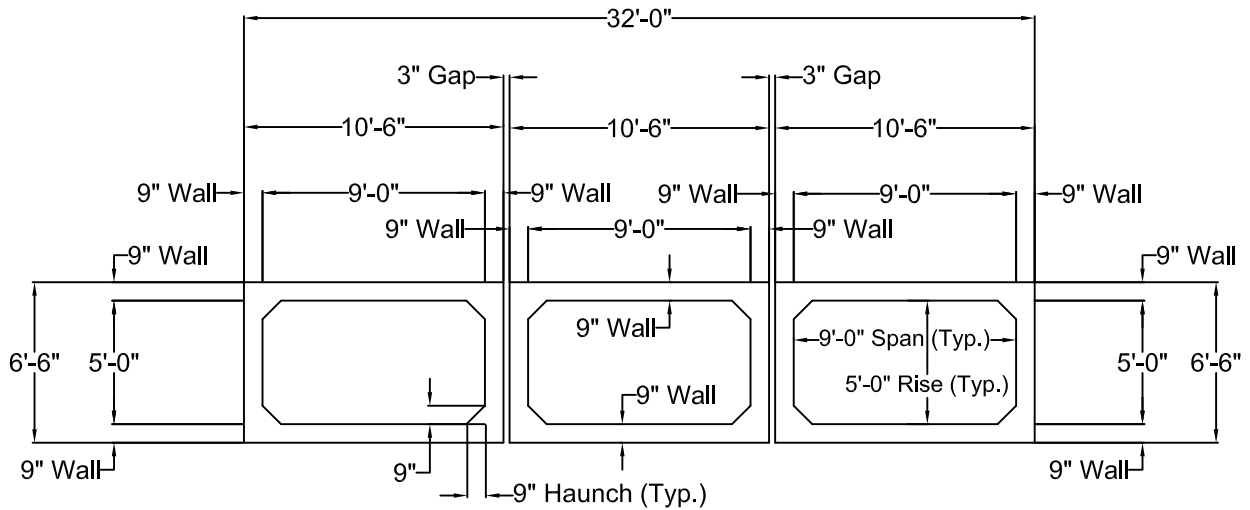
EXAMPLE



P.O. BOX 7369
ROMEOWILLE, IL. 60446
PHONE: (815) 834-0320
FAX: (815) 838-9275



SECTION A-A



SECTION B-B

BOX CULVERT NOTES:

1. Precast Boxes to be manufactured per A.A.S.H.T.O. M-273 & A.S.T.M. C-850 specifications and all I.D.O.T. requirements for boxes with 2' or less of cover under H.S.-20 Loading.
2. Concrete shall have a minimum compressive strength of 5,000 p.s.i.

DESIGNED BY:	G.S.	DATE:	4-29-08
DRAWN BY:	P.B.	DATE:	4-29-08
SCALE:	N.T.S.	PAGE:	2 OF 2

9'-0" X 5'-0" PRECAST
BOX CULVERT
DETENTION SYSTEM

EXAMPLE


CONCRETE SPECIALTIES
 P.O. BOX 7369
 ROMEOVILLE, IL. 60446
 PHONE: (815) 834-0320
 FAX: (815) 838-9275