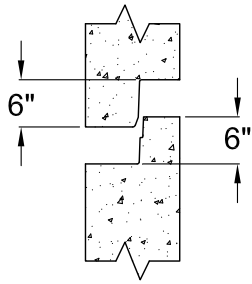
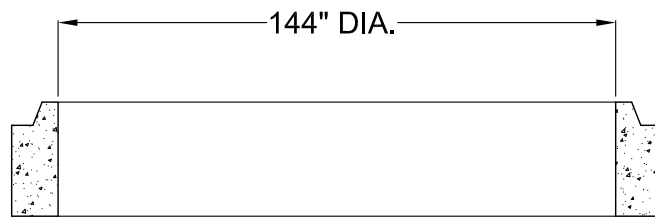
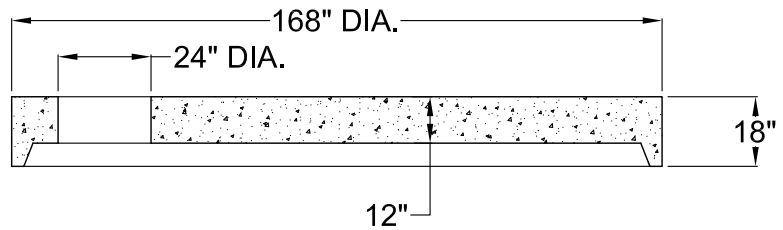
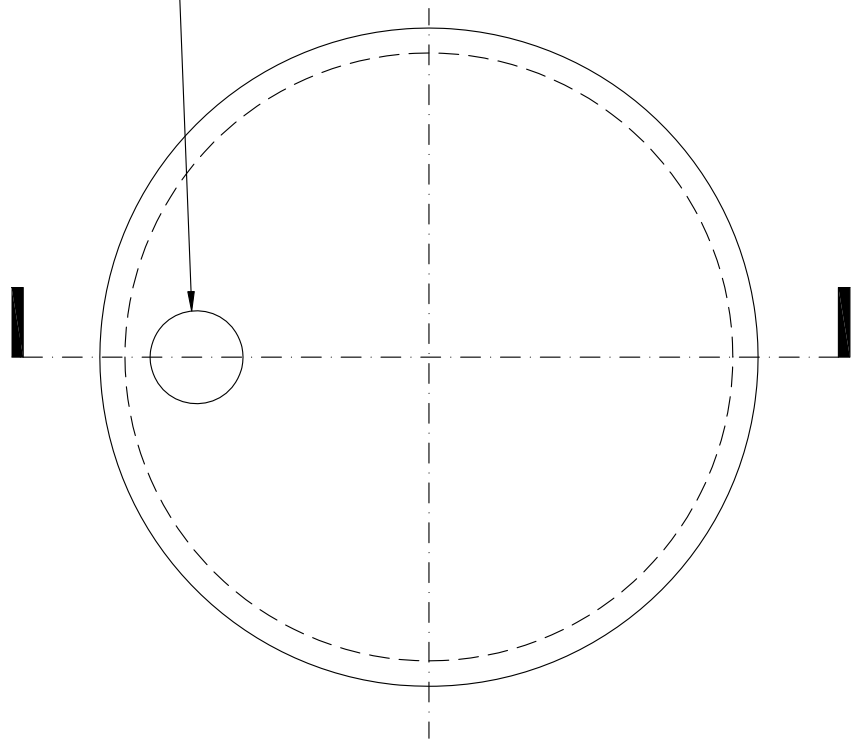


EXTERIOR



JOINT DETAIL

OPENING SIZE SHAPE AND LOCATION AS REQUIRED



**NOTES**

1. ALL UNITS MEET ASTM C-478 FOR PRECAST SECTIONS.
2. ALL UNITS MEET ASTM A-82, A-496, A-185, AND A-497 FOR REINFORCEMENT.
3. ALL UNITS MEET AASHTO M 199M.
4. BUILT IN ACCORDANCE WITH IDOT AND WDOT STANDARD SPECIFICATIONS.
5. COATINGS OPTIONAL AS REQUIRED.

**STANDARD PRECAST 144\" DIA.  
FLAT TOP SECTION**



1375 Gifford Rd  
Elgin, IL 60120  
PH (847) 608-1200  
FX (847) 608-1205

DRN BY: <b>DM</b>	DATE <b>07/25/07</b>	DWG NO.	REV
CHK'D BY:	DATE	SCALE <b>NTS</b>	SHEET OF